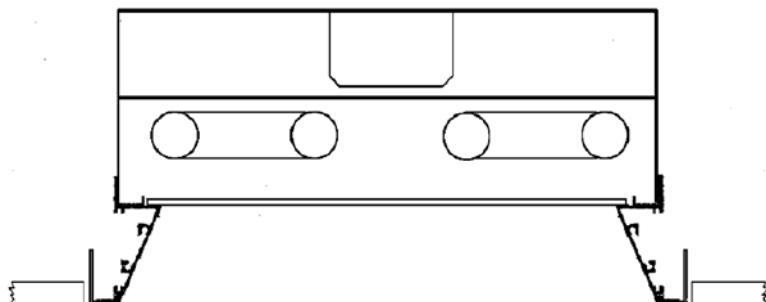


**RECESSED FLUORESCENT LUMINAIRE
2" REGRESSED SPLAY TRIM FOR "T" GRID CEILING
T8 OCTRON ELECTRONIC BALLAST**

SERIES 464

"SKYLUX"



PROJECT:
FIXTURE TYPE:
CATALOG NO.:
VOLTS:
BALLAST TYPE:
DATE:

APPLICATIONS: The 2" deep extruded aluminum regressed splay trim with matte white acrylic diffuser creates a "skylite" effect providing a shadowless soft glare-free illumination. The ideal troffer for various installations such as conference rooms, lobbies, and executive areas.

SPECIFICATIONS:

HOUSING: Die-formed from code gauge cold rolled steel. Rigidly fabricated and electrically welded for true and perfect alignment. Steel parts are chemically cleaned and phosphatized ensuring maximum paint adhesion. Finished in white polyester powder coating for reflectance of 90%.

TRIM: Regressed splay trim of heavy gauge extruded aluminum continuously interlocked and mechanically fastened to the housing. Trim is flush with the ceiling line at a 70 degree angle and is regressed 2".

SHIELDING: Smooth white .125 flat acrylic diffuser supplied as standard. Diffuser rests on upper most portion of the regressed trim and tip-tilts in and out. Other diffuser options are available. (CONSULT FACTORY)

BALLAST: Fully electronic T8 HPF thermally protected class "P" 120v & 277v ballasts are standard. Magnetic energy saving ballasts 120v & 277v 60HZ and ballasts of other voltages and frequencies are also available (CONSULT FACTORY).

CERTIFICATION: U.L. listed and I.B.E.W. Union made.

ORDERING INFORMATION

CATALOG #	LAMPS	BALLAST	SIZE
464GRS22U232	2-32W T8U	T8 ELECTRONIC	2 X 2
464GRS22U332	3-31WT8U 1 5/8	T8 ELECTRONIC	2 X 2
464GRS22217	2-17W T8	T8 ELECTRONIC	2 X 2
464GRS22317	3-17W T8	T8 ELECTRONIC	2 X 2
464GRS22417	4-17W T8	T8 ELECTRONIC	2 X 2

**OPTIONAL: ELECTRONIC DIMMING BALLAST (ADD SUFFIX DIM)
EMERGENCY BATTERY BACKUP (ADD SUFFIX EML)**